

# Touchscreen Setting Procedure.

**Click on “PLAYBACK [Tablet PC]” on WINGS.**  
**The settings window will open.**

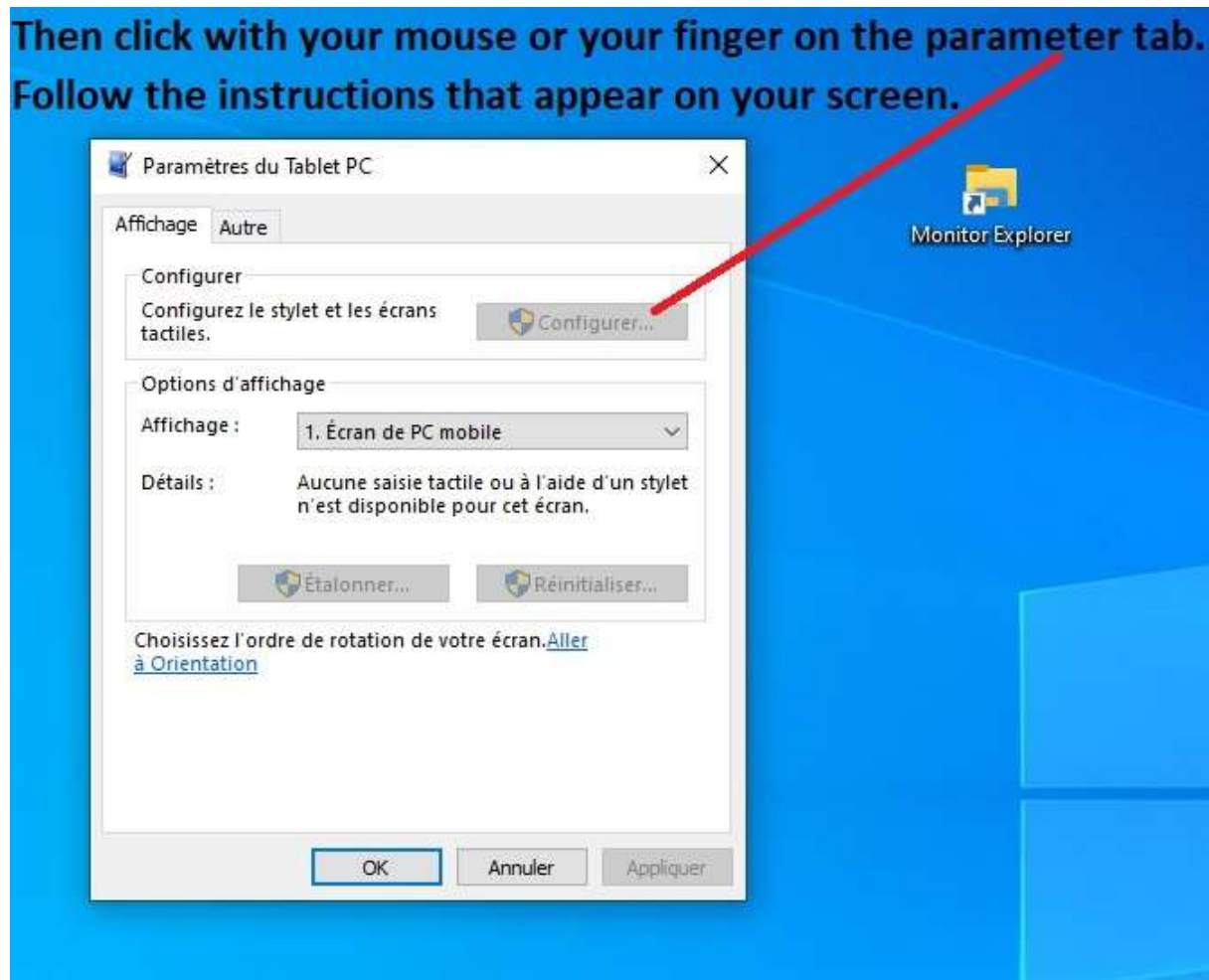
In some cases, if you have set your touchscreen as your Main Monitor, this window setting can be launched under WINGS workspace. In this case type F8 (for WINGS) or F7 (for WINGS Alt) to Toggle show/hide WINGS.

CLIP LAUNCHER	SAVE PRESET - CLIP	✓ Check for Updates...	DASHBOARD	CLIP - TRACK	Convert to Instrument Track	Convert to Audio Track	Convert to Hybrid Track	ARRANGER JUMP	ZenDAW
▶ Launch Current	➔ Save to Library...	▶ Save as Default Preset	⚙ Settings	✓ Bounce	Loop Selected Region	Consolidate	Split	◀ Backward 8 Bars	▶ Forward 8 Bars
▶ Launch Previous	▶ Launch Next	★ Load Default Preset	▶ Cue Markers	✓ Bounce In Place	Slice In Place...	Slice to Drum Machine...	Slice to Multisample...	🔄 Beginning of Arranger Loop	🔄 End of Arranger Loop
▶ Launch Scene 1	▶ Launch Scene 3	▶ Launch Scene 5	▶ Launch Scene 7	♭ Transpose a Semitone Down	# Transpose a Semitone Up	🔄 Transpose an Octave Down	🔄 Transpose an Octave Up	◀ Beginning of Previous Bar	▶ Beginning of Next Bar
▶ Launch Scene 2	▶ Launch Scene 4	▶ Launch Scene 6	▶ Launch Scene 8	X2 Double Content	Insert from Library...	Insert Silence	Make Legato	◀ Previous Cue Marker	▶ Next Cue Marker
AUDIO - EXPORT			LENGTH OF EVENTS	BEAT GRID SUBD	NUDGE EVENTS		PROJECT SELECTION		
Auto-Fade	Reset Fades	Import Waveables...	Shorter Ticks-Reminder	Longer Ticks-Reminder	Next	Backward Ticks-Reminder	Forward Ticks-Reminder	Select Prev Project	Select Next Project
Export Audio...	Export MIDI...	Studio I/O	One Step Shorter	One Step Longer	Previous	One Step Backward	One Step Forward	🔄 Restore Auto Control	🔄 Activate Audio Engine
Open...	Reverse	DSP Perf Graph	Detail Editor	Automation Editor	Device Panel	Mixer Panel	Automation - All	SELECTION	
PLAYBACK [Tablet PC]	➔ CLICK HERE!	Controller Script	First	SCENE NAV [Item ?]	NAVIGATION	Reveal File	Automation - SEL	Extend to Previous	Extend to Next
Arranger Selected Tracks	Arranger All Tracks	Automation Moves with Clips	Last	Browser Panel	Project Panel	Mappings	Extend to Below	Extend to Above	Focus Left Panel
QUANTIZE [Sends]	Effect Tracks	Deactivated Tracks	CLIP LAUNCHER	ARRANGER TIMELINE	ARRANGE	MIX	EDIT	Focus Right Panel	Focus Panel Below
Quantize	Quantize Length	Quantize...	ADD TRACK [A/D]	Inspector	SCALE [Layer List]	TRACK [Arm]	Toggle Device	PROJECT [Save]	Quit
EDIT [Velocity]	TRACK / CLIP	Track I/O Routing	Add Instrument Track	Add Audio Track	Scale 200%	Solo	Mute	New Project	Collect and Save...
Undo	Redo	Cut	Add Effect Track	Add Group Track	Scale 50%	Global Solo Off	Global Mute Off	Save as...	Save as Template...
Copy	Paste	Duplicate	Add Scene	Add Scene from Playing Clips	Automation	Group	Ungroup	Close	New from Template...
Delete	Select All	Unselect All	SCREEN [Full Screen]	ZOOM [Track Height]	WINGS	Enter Group	Exit Group	TRANSPORT [K]	Follow Playback
TOOLS [Snapping]	Punch-In	Punch-Out	Increase GUI Scaling	Zoom In	Zoom Out	Metronome	Loop	Clip Launcher Overdub	W
Pointer	Time	Pen	Decrease GUI Scaling	Fit SEL or Prev	Fit SEL or All	Fit Selection	PLAY / STOP FROM START	PLAY / STOP	REC
Eraser	Knife	Rename							

**Then click with your mouse or your finger on the parameterer tab.**

**Follow the instructions on the screen.**

**Then click with your mouse or your finger on the parameter tab.**  
**Follow the instructions that appear on your screen.**



Legal Note:

Bigwig Studio™ and associated logos are registered trademarks of Bitwig GmbH.

Logo use is for illustration purposes only. ZenDAW are not affiliated with Bitwig in any way.

[www.zendaw.com](http://www.zendaw.com)